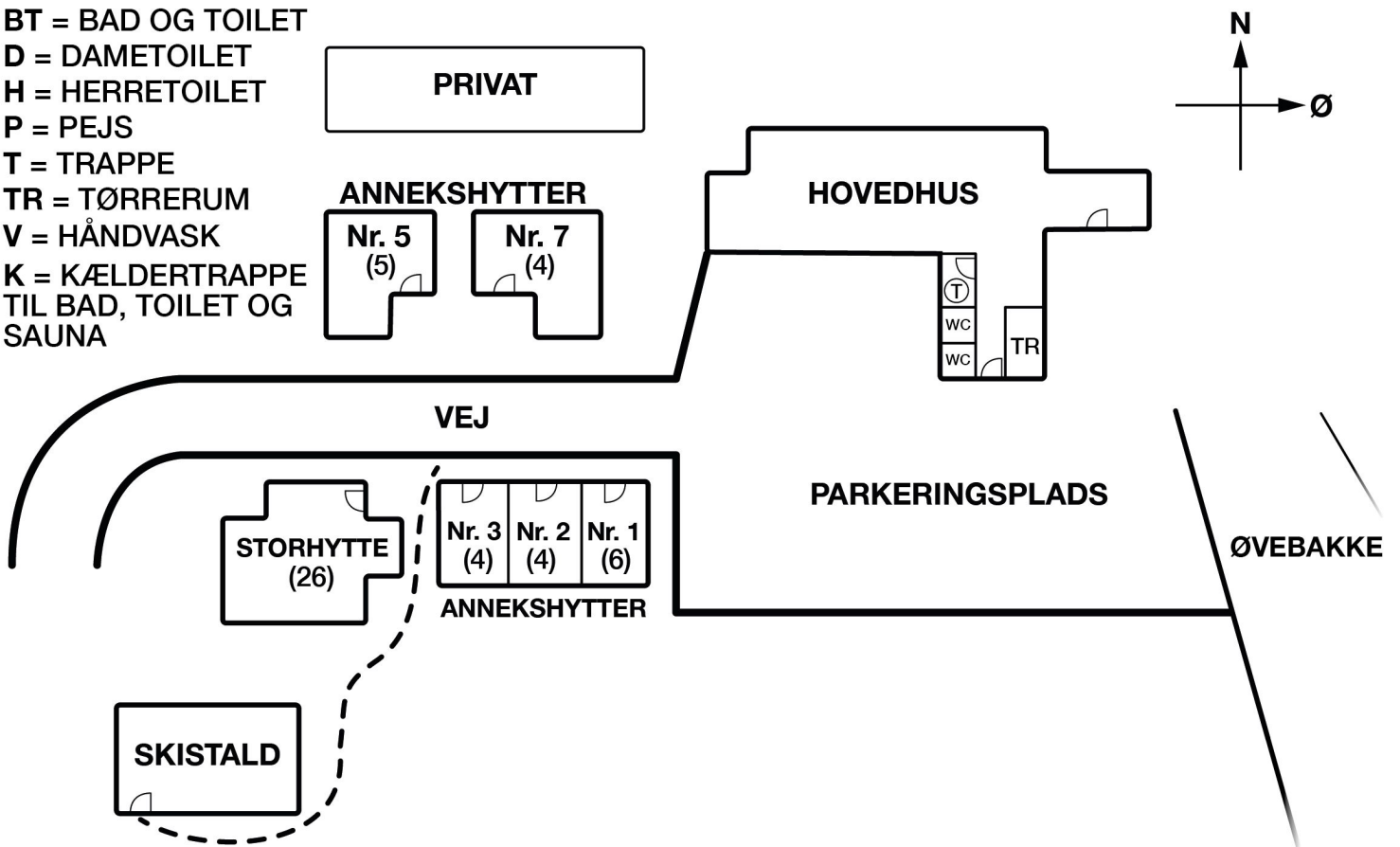
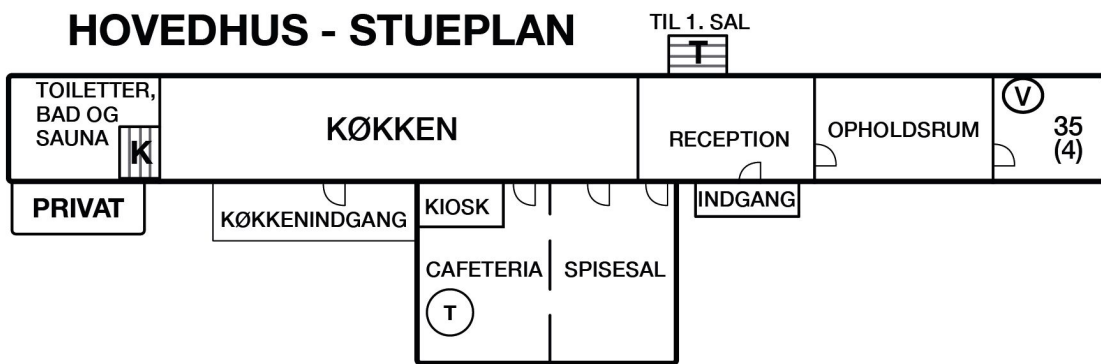


PLANTEGNING AF SULSETER FJELDSTUE

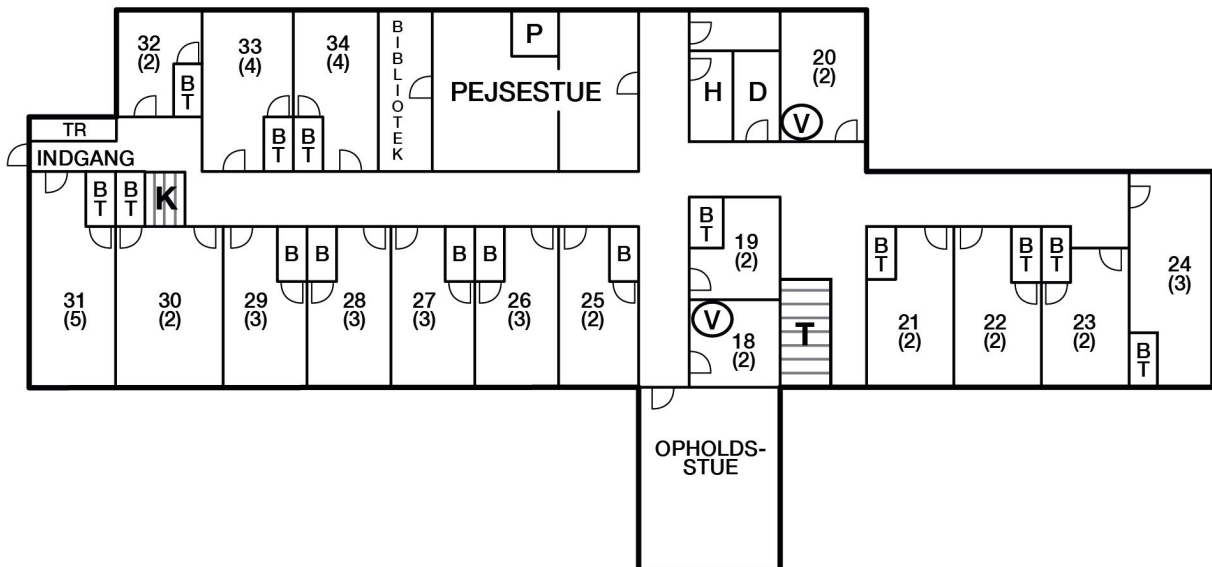
- B = BAD
- BT = BAD OG TOILET
- D = DAMETOILET
- H = HERRETOILET
- P = PEJS
- T = TRAPPE
- TR = TØRRERUM
- V = HÅNDVASK
- K = KÆLDERTRAPPE TIL BAD, TOILET OG SAUNA



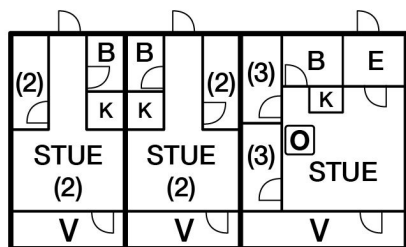
HOVEDHUS - STUEPLAN



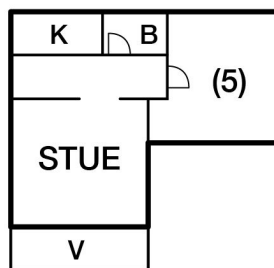
HOVEDHUS - 1. SAL



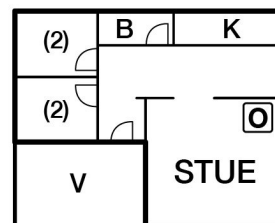
ANNEKSHYTTER



Nr. 3 Skarven
Nr. 2 Krøkla
Nr. 1 Gråhø



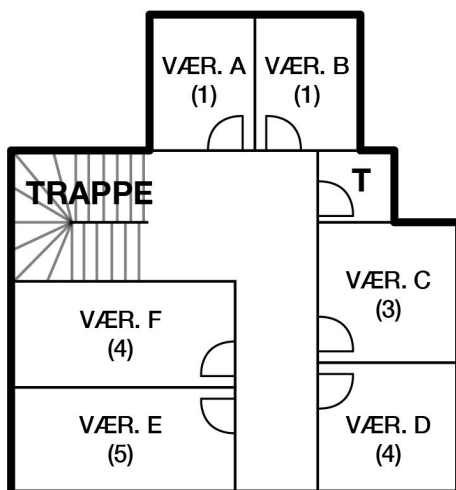
Nr. 5 Høgknappen



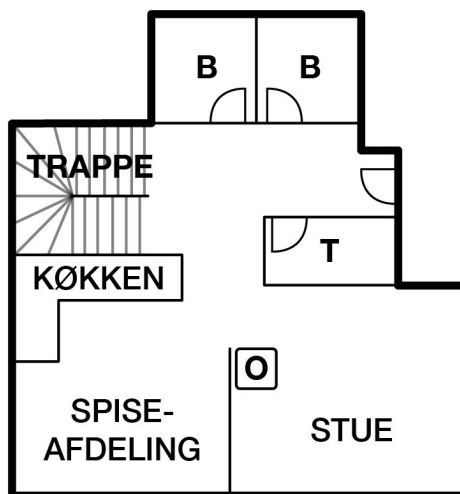
Nr. 7 Rundkoll

Nr. 4: STORHYTTEN "RONDANE"

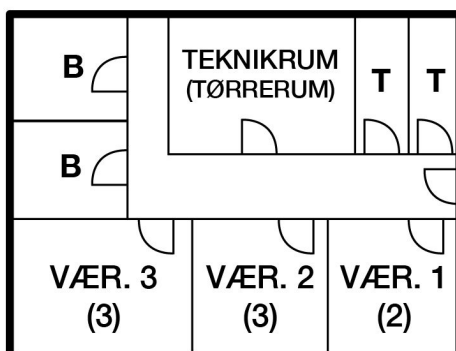
ØVERSTE PLAN



STUEPLAN



NEDERSTE PLAN



- B = BADEVÆRELSE
- O = BRÆNDEOVN
- E = ENTRE
- K = KØKKEN
- T = TOILET
- V = VERANDA